



South Kent

ENERGY PARK

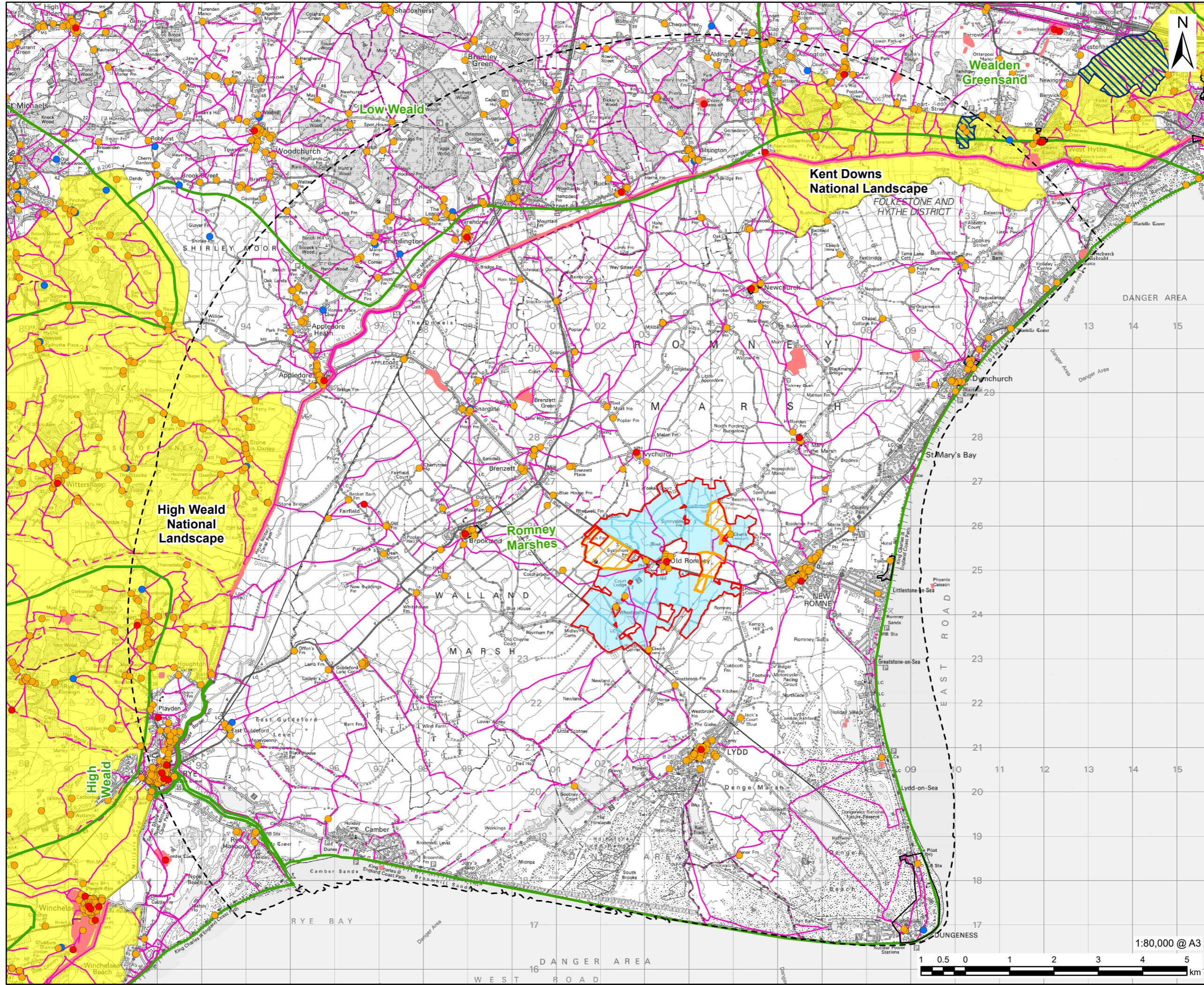
Planning Inspectorate Reference: EN0110035

Environmental Impact Assessment Scoping Report - Figures
June 2026



Table of Contents

PART 1	
Figure 1-1	Proposed Development Location Plan
Figure 2-1	Environmental Constraints
Figure 3-1	DCO Site Boundary and Land Use
Figure 6-1	DCO Solar Projects within 5 km of the Proposed Development
PART 2	
Figure 8-1	Designated Heritage Assets
Figure 8-2	Non-Designated Heritage Assets
PART 3	
Figure 9-1	Sites statutorily designated for their biodiversity value at an International (European) level up to 30 km from the DCO Site Boundary
Figure 9-2	Sites statutorily designated for their biodiversity value at a National or local level within 5 km of the DCO Site Boundary
Figure 9-3	Location of non-statutorily designated sites and priority habitats within 2 km of the DCO Site Boundary
Figure 9-4	Habitats within the DCO Site Boundary
PART 4	
Figure 10-1	Surface Water Features and their Attributes
Figure 10-2	Bedrock Aquifers
Figure 10-3	Groundwater Features and their Attributes
Figure 10-4	Fluvial and Tidal Flood Risk
Figure 10-5	Surface Water Flood Risk
PART 5	
Figure 11-1	Landscape and Visual Study Area
Figure 11-2	Zone of Theoretical Visibility (ZTV) DCO Site Boundary, North – Bare Earth
Figure 11-3	ZTV DCO Site Boundary, South – Bare Earth
Figure 12-1	Noise and Vibration Study Areas and Noise Monitoring Locations
Figure 13-1	Study Area for Socio-Economic Impacts
PART 6	
Figure 14-1	Predictive Agricultural Land Classification (ALC)
Figure 14-2	Soil Associations
Figure 15-1	Transport and Access Study Area
Figure 15-2	Existing Walking and Cycling Network
Figure 15-3	Bus Stops and Routes
Figure 15-4	Railway Stations
Figure 15-5	Traffic Survey Locations
Figure 17-1	Air Quality Study Area for South Kent Energy Park
Figure 17-2	Ground Conditions Study Area Boundaries



PROJECT



CLIENT



CONSULTANT

AECOM Limited
3 Rivergate
Bristol, BS1 6EW
www.aecom.com

LEGEND

- DCO Site Boundary
 - Main Site
 - Interconnecting Areas
 - 10km Landscape Study Area¹
 - Listed Building - Grade I
 - Listed Building - Grade II*
 - Listed Building - Grade II
 - Registered Parks and Garden
 - Conservation Area
 - Record of Scheduled Monument
 - National Character Area (NCA)
 - National Landscape
- Public Right of Way:
- Footpath
 - Bridleway
 - Restricted Byway
 - Byway Open to All Traffic

NOTES

1. Study Area aligned to the coastal tidal boundary such that it does not extend up to 10km in all directions from the Main Site.
 2. Site is covered by the Local Landscape Area Romney Marsh (not illustrated).
- © Crown copyright and database rights 2025 Ordnance Survey AC0000808122.
 © Crown Copyright 2025. Contains Ordnance Survey data © Crown copyright and database right 2025. Released under OGL.
 © Historic England and Local Planning Authorities 2025. Contains Ordnance Survey data © Crown copyright and database right 2025. Released under OGL.
 © Natural England copyright. Contains Ordnance Survey data © Crown copyright and database right 2025.
 Contains data supplied by © Kent County Council (2024), © East Sussex County Council (2024).

ISSUE PURPOSE

Scoping Report

PROJECT NUMBER

60716220

FIGURE TITLE

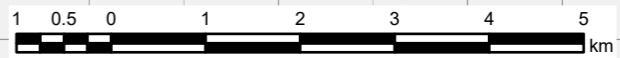
Landscape and Visual Study Area

FIGURE NUMBER

Figure 11-1

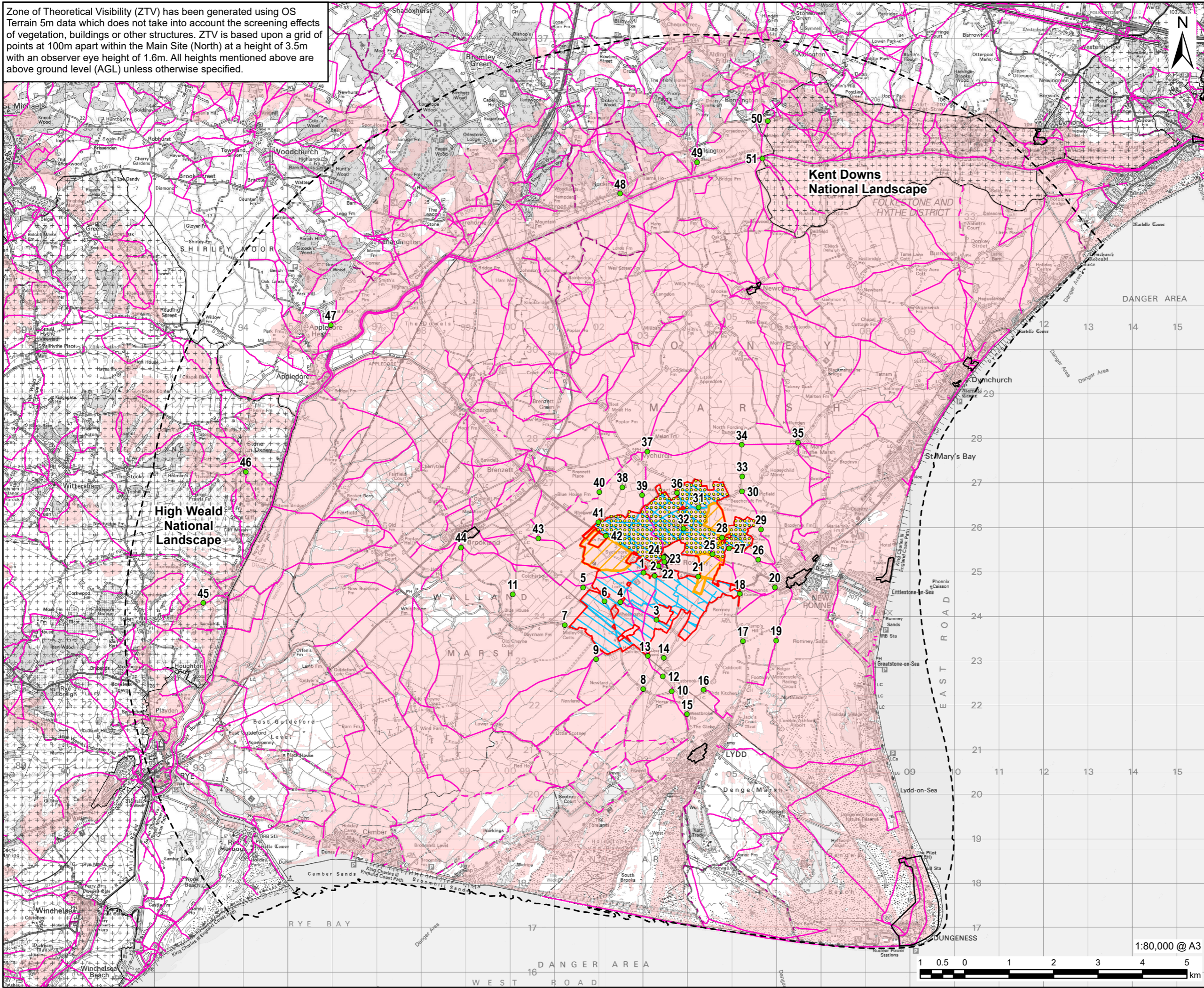


1:80,000 @ A3



This drawing has been prepared for the use of AECOM's client. It may not be used, modified, reproduced or relied upon by third parties, except as agreed by AECOM or as required by law. AECOM accepts no responsibility, and denies any liability whatsoever, to any party that uses or relies on this drawing without AECOM's express written consent. Do not scale this document. All measurements must be obtained from the stated dimensions.

Zone of Theoretical Visibility (ZTV) has been generated using OS Terrain 5m data which does not take into account the screening effects of vegetation, buildings or other structures. ZTV is based upon a grid of points at 100m apart within the Main Site (North) at a height of 3.5m with an observer eye height of 1.6m. All heights mentioned above are above ground level (AGL) unless otherwise specified.



PROJECT
South Kent
ENERGY PARK
CLIENT



CONSULTANT
AECOM Limited
3 Rivergate
Bristol, BS1 6EW
www.aecom.com

- LEGEND**
- DCO Site Boundary
 - Main Site
 - Interconnecting Areas
 - 10km Landscape Study Area¹
 - Footpath
 - Bridleway
 - Restricted Byway
 - Byway Open to All Traffic
 - Conservation Area
 - National Landscape
 - Indicative Panel Location
 - Viewpoint Location
 - Zone of Theoretical Visibility

NOTES

1. Study Area aligned to the coastal tidal boundary such that it does not extend up to 10km in all directions from the Main Site.
- © Crown copyright and database rights 2025 Ordnance Survey AC0000808122.
- © Historic England and Local Planning Authorities 2025. Contains Ordnance Survey data © Crown copyright and database right 2025. Released under OGL.
- © Natural England copyright. Contains Ordnance Survey data © Crown copyright and database right 2025.
- Contains data supplied by © Kent County Council (2024), © East Sussex County Council (2024).

ISSUE PURPOSE

Scoping Report

PROJECT NUMBER

60716220

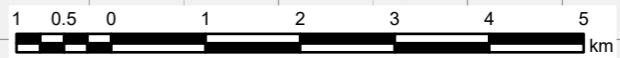
FIGURE TITLE

Zone of Theoretical Visibility (ZTV)
DCO Site Boundary, North – Bare Earth

FIGURE NUMBER

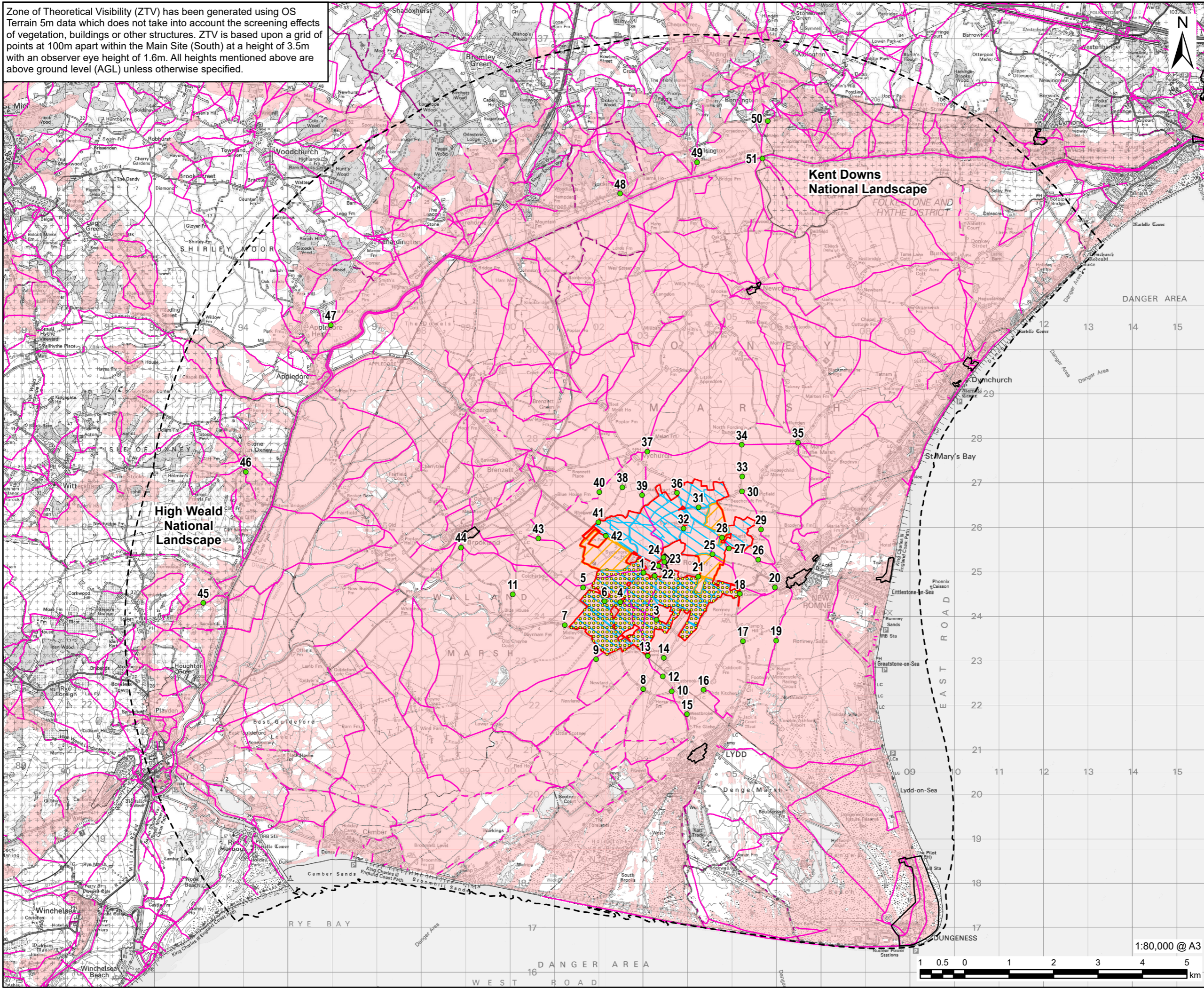
Figure 11-2

1:80,000 @ A3



This drawing has been prepared for the use of AECOM's client. It may not be used, modified, reproduced or relied upon by third parties, except as agreed by AECOM or as required by law. AECOM accepts no responsibility, and denies any liability whatsoever, to any party that uses or relies on this drawing without AECOM's express written consent. Do not scale this document. All measurements must be obtained from the stated dimensions.

Zone of Theoretical Visibility (ZTV) has been generated using OS Terrain 5m data which does not take into account the screening effects of vegetation, buildings or other structures. ZTV is based upon a grid of points at 100m apart within the Main Site (South) at a height of 3.5m with an observer eye height of 1.6m. All heights mentioned above are above ground level (AGL) unless otherwise specified.



PROJECT



CONSULTANT

AECOM Limited
3 Rivergate
Bristol, BS1 6EW
www.aecom.com

LEGEND

- DCO Site Boundary
- Main Site
- Interconnecting Areas
- 10km Landscape Study Area¹
- Footpath
- Bridleway
- Restricted Byway
- Byway Open to All Traffic
- Conservation Area
- National Landscape
- Indicative Panel Location
- Viewpoint Location
- Zone of Theoretical Visibility

NOTES

1. Study Area aligned to the coastal tidal boundary such that it does not extend up to 10km in all directions from the Main Site.
- © Crown copyright and database rights 2025 Ordnance Survey AC0000808122.
- © Historic England and Local Planning Authorities 2025. Contains Ordnance Survey data © Crown copyright and database right 2025. Released under OGL.
- © Natural England copyright. Contains Ordnance Survey data © Crown copyright and database right 2025.
- Contains data supplied by © Kent County Council (2024), © East Sussex County Council (2024).

ISSUE PURPOSE

Scoping Report

PROJECT NUMBER

60716220

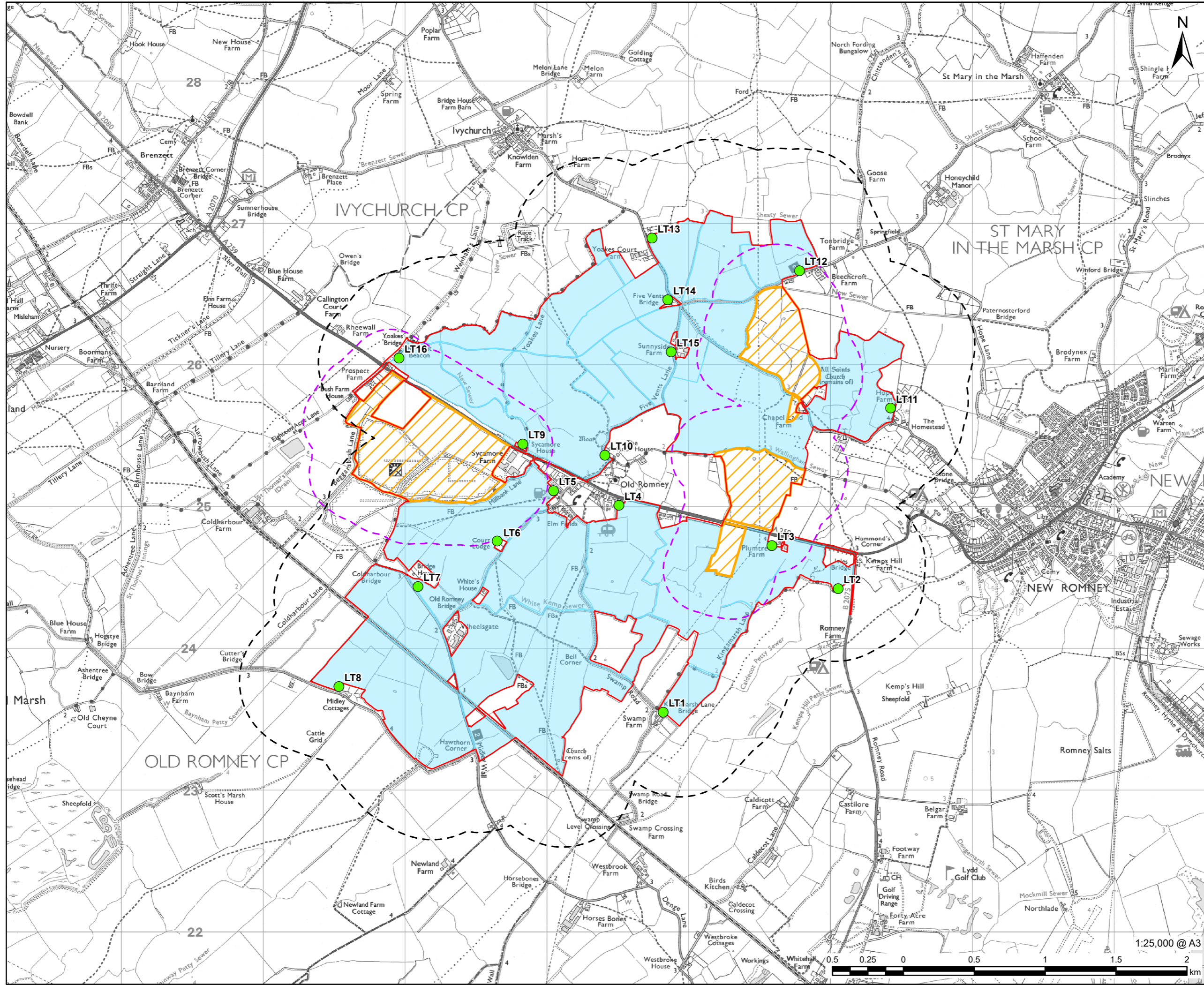
FIGURE TITLE

Zone of Theoretical Visibility (ZTV)
DCO Site Boundary, South - Bare
Earth

FIGURE NUMBER

Figure 11-3

This drawing has been prepared for the use of AECOM's client. It may not be used, modified, reproduced or relied upon by third parties, except as agreed by AECOM or as required by law. AECOM accepts no responsibility, and denies any liability whatsoever, to any party that uses or relies on this drawing without AECOM's express written consent. Do not scale this document. All measurements must be obtained from the stated dimensions.



- DCO Site Boundary
- Main Site
- Interconnecting Areas
- 500m Main Site Study Area
- Interconnecting Area 300m Study Area
- Noise Monitoring Location

© Crown copyright and database rights 2025
Ordnance Survey AC0000808122.

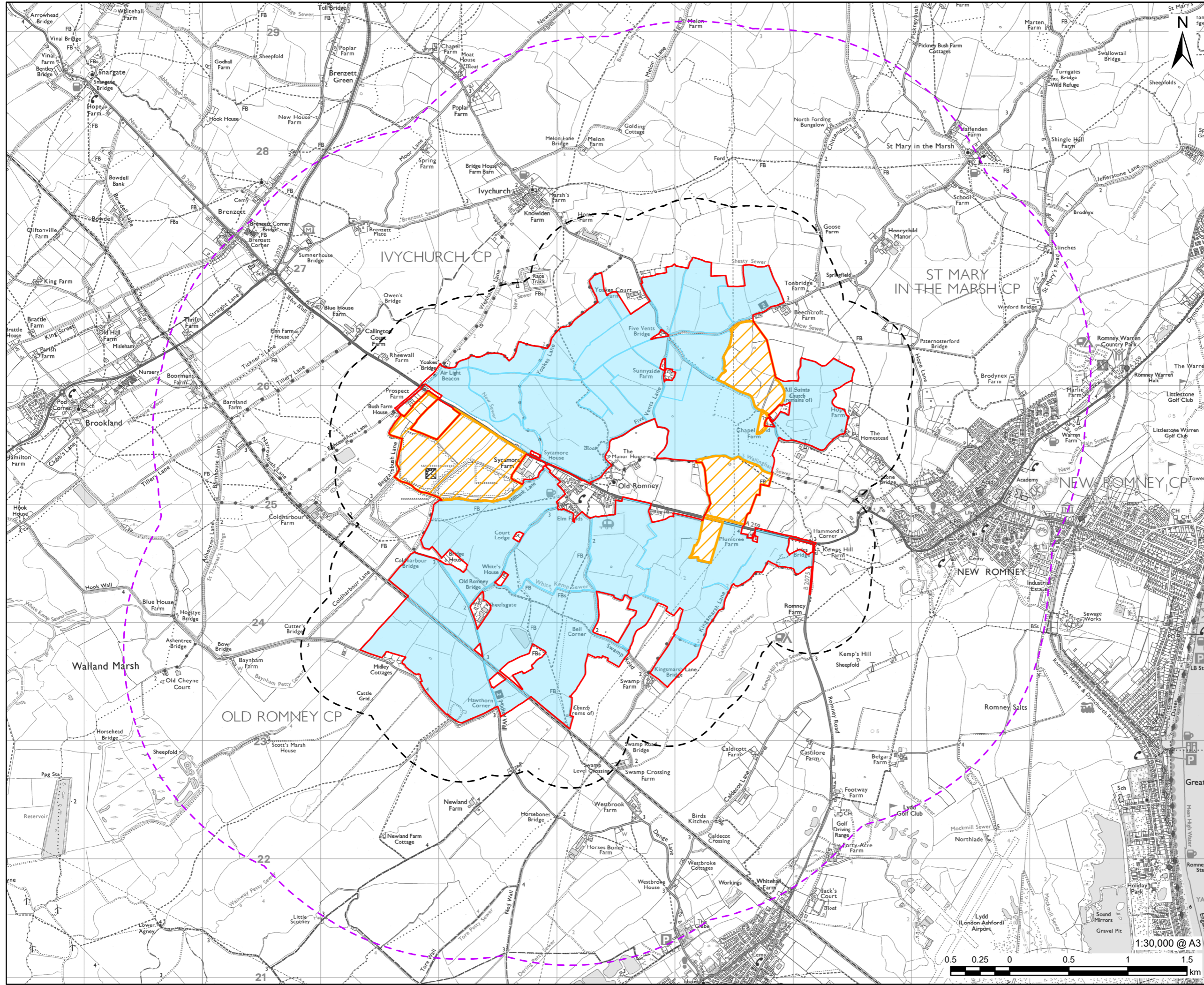
Scoping Report

60716220

Noise and Vibration Study Areas and
Noise Monitoring Locations

Figure 12-1

This drawing has been prepared for the use of AECOM's client. It may not be used, modified, reproduced or relied upon by third parties, except as agreed by AECOM or as required by law. AECOM accepts no responsibility, and denies any liability whatsoever, to any party that uses or relies on this drawing without AECOM's express written consent. Do not scale this document. All measurements must be obtained from the stated dimensions.



PROJECT



CLIENT



CONSULTANT

AECOM Limited
3 Rivergate
Bristol, BS1 6EW
www.aecom.com

LEGEND

- DCO Site Boundary
- Main Site
- Interconnecting Areas
- 500m Study Area
- 2km Study Area

NOTES

© Crown copyright and database rights 2025
Ordnance Survey AC0000808122.

ISSUE PURPOSE

Scoping Report

PROJECT NUMBER

60716220

FIGURE TITLE

Study Area for Socio-Economic Impacts

FIGURE NUMBER

Figure 13-1

This drawing has been prepared for the use of AECOM's client. It may not be used, modified, reproduced or relied upon by third parties, except as signed by AECOM or as required by law. AECOM accepts no responsibility, and denies any liability whatsoever, to any party that uses or relies on this drawing without AECOM's express written consent. Do not scale this document. All measurements must be obtained from the stated dimensions.